

A modern interior design rendering. The foreground features a curved, grey upholstered sofa on a checkered floor of white and reddish-brown marble tiles. A contemporary wall sconce with multiple white globe lights is mounted on the white wall above the sofa. In the background, a long hallway with wood-paneled walls leads to a bright area with a chair and a window.

316-318 Garden Street

INTERIOR DESIGN PACKET

Lumã
INTERIORS



THE LOBBY



FOYER

316-318 Garden Street is a luxury residential property located in the heart of Hoboken. Boasting approximately 1,700 square feet, this pied-a-terre features subzero appliances, white oak herringbone floors, custom kitchen cabinets and vanities, as well as other beautiful high-end finishes.

A new construction property featuring European design details with its plaster wall finishes, sophisticated arches and brass fixtures.



HALLWAY





KITCHEN

Lumã
INTERIORS



MAIN LIVING

The interiors were approached through a unique storytelling lens. Creating a space that values artful and collected style while embracing balance, intention and authenticity throughout the project.

Carefully curated, artisan-made, textural, and tonal; each space within the property is layered with contrasting elements combining contemporaneity with timeless elegance, and a nod to European design; resulting in a beautiful, intimate, and made for living environment.



MAIN LIVING





THE PRIMARY





THE PRIMARY



PRIMARY BATHROOM





BEDROOM TWO





BEDROOM THREE

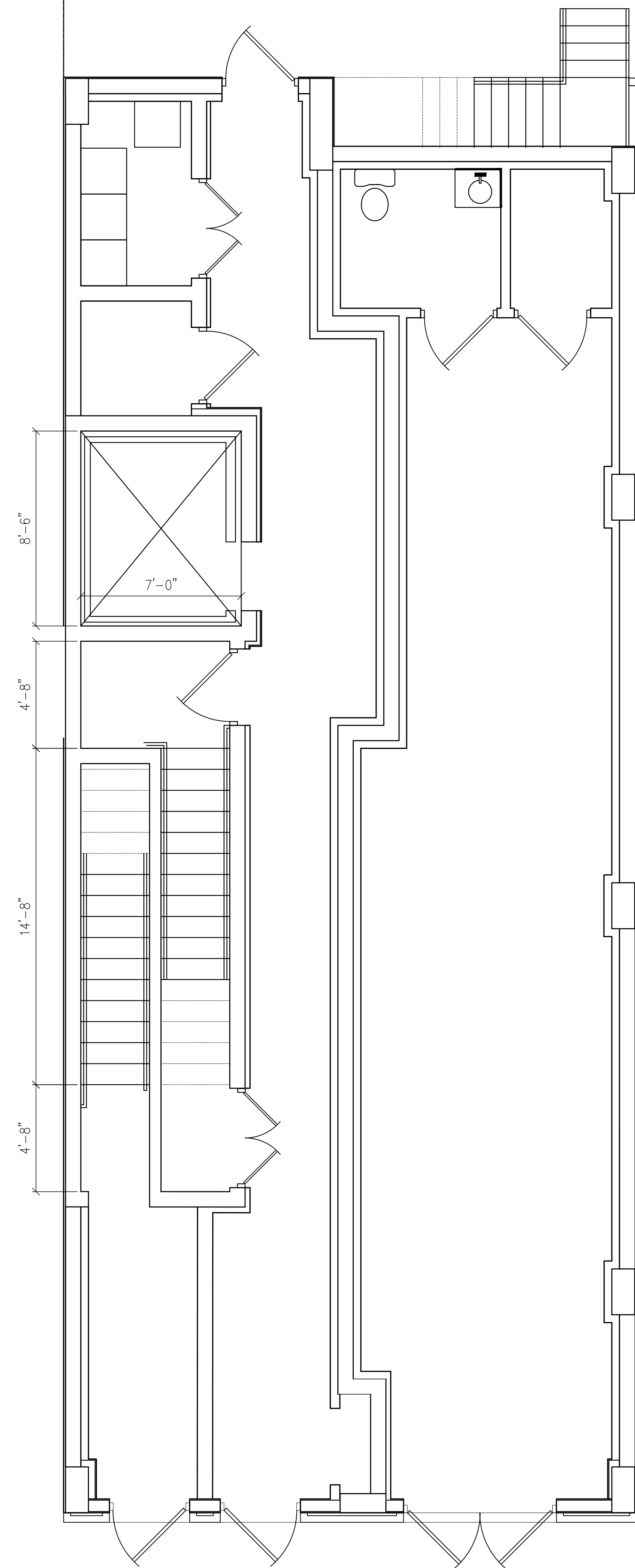




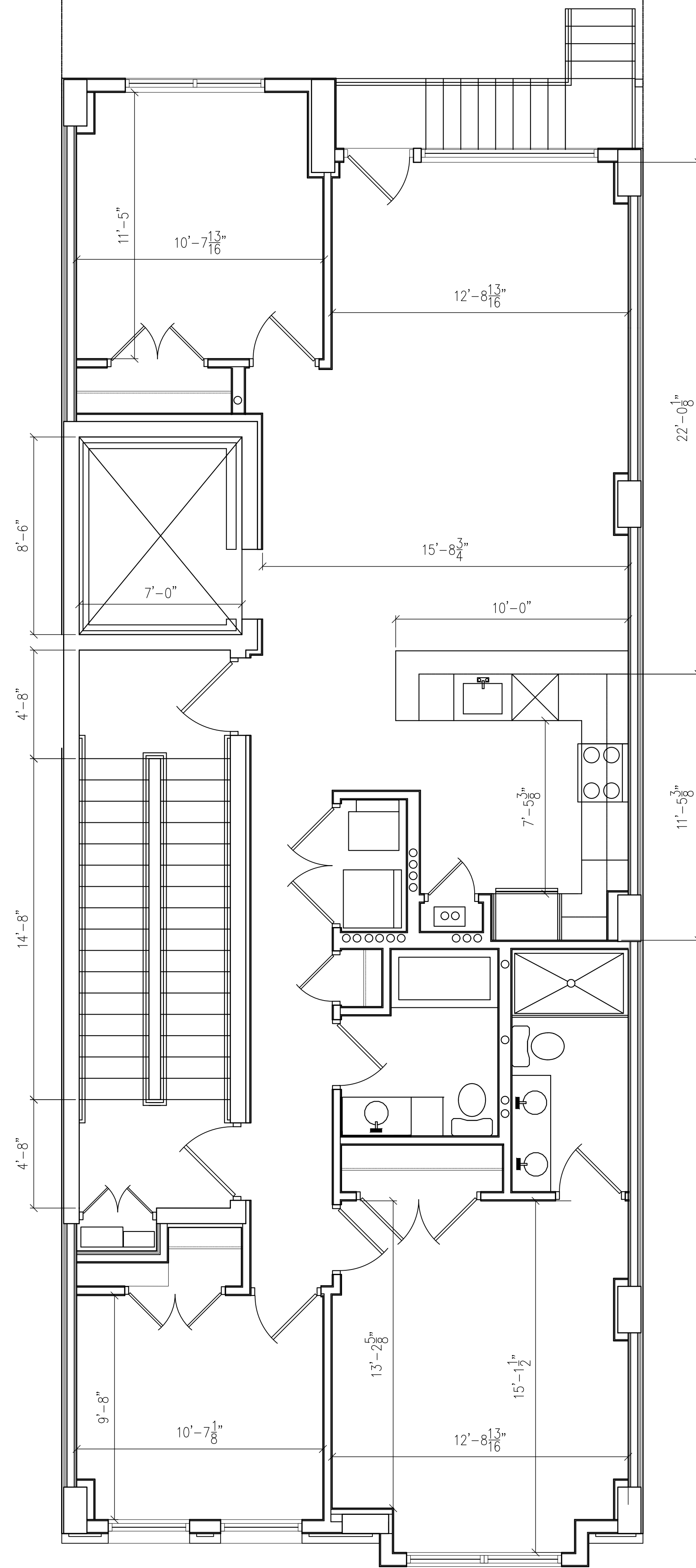
GUEST BATHROOM



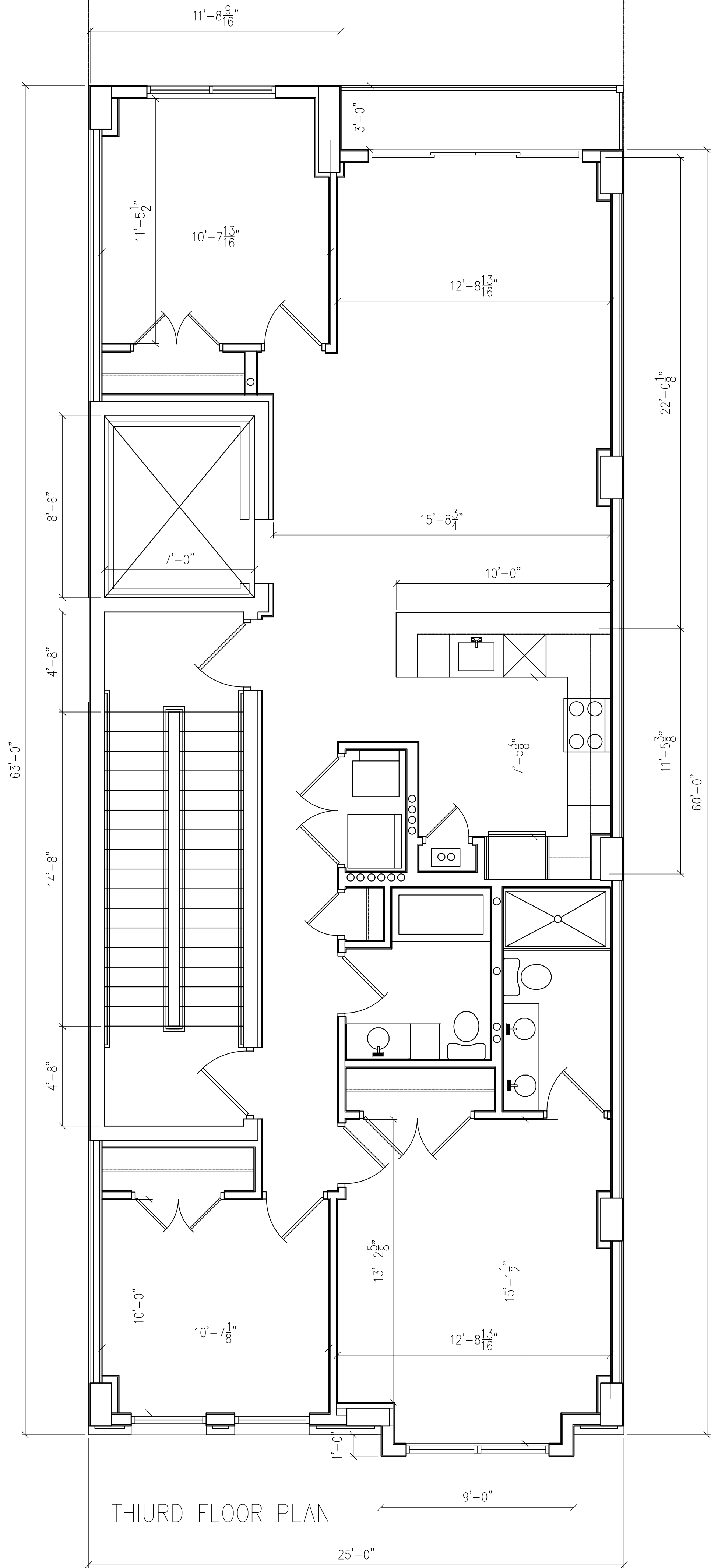




FIRST FLOOR PLAN



SECOND FLOOR PLAN



THIRD FLOOR PLAN